

You can customize your songs or purchase additional titles from an extensive song library at:
www.onkeysongs.com



Distributed by MEMCORP, Inc., Weston, Florida
www.memorexelectronics.com
Powered by IVL Technologies Ltd. and On-Key™ Karaoke
are registered trademarks of IVL Technologies Ltd.

Memorex®

Is it live or is it Memorex?™

KARAOKE PLAYER

User's Guide

BEFORE OPERATING THIS PRODUCT, PLEASE
READ THESE INSTRUCTIONS COMPLETELY.



Model
MKS4002

Trouble Shooting - Customer Support

If you encounter a problem that you cannot resolve using this guide, you may contact our toll free customer support line.

If you are experiencing difficulties with additional song downloads or website access please have the following information ready before calling customer support:

1 - Description of the problem.

What is the problem? Are you able to access the website? Can you purchase songs? Were you able to install the Karaoke Manager software on your computer? Can you get songs from your web account?

2 - The Operating System of your computer.

Windows: The "operating system" is the version of Windows you use. Right click on "My Computer" and select "Properties." A window will display your system information. You'll need Windows 98 Second Edition or later.

Mac: Under the "Apple" icon, choose "About my computer." You'll need OS 9.0 or higher.

3 - Your email address.

4 - Internet connection type.

How do you connect to the internet? Do you use a telephone line, ADSL, or cable?

1-866-RU ONKEY (1-866-786-6733)

FCC STATEMENT

This equipment has been tested and found to comply with the limits for a Class B digital device, pursuant to Part 15 of the FCC Rules. These limits are designed to provide reasonable protection against harmful interference in a residential installation. This equipment generates, uses and can radiate radio frequency energy, and, if not installed and used in accordance with the instructions, may cause harmful interference to radio communications. However, there is no guarantee that interference will not occur in a particular installation. If this equipment does cause harmful interference to radio or television reception, which can be determined by turning the equipment off and on, the user is encouraged to try to correct the interference by one or more of the following measures:

- Reorient or relocate the receiving antenna.
 - Increase the separation between the equipment and the receiver.
 - Consult the dealer or an experienced radio/TV technician for help.
- Changes or modifications not expressly approved by the party responsible for compliance could void the user's authority to operate the equipment.

CAUTION - ELECTRIC TOY

Not recommended for children under 8 years of age. As with all electric products, precautions should be observed during handling and use to prevent electric shock.

IMPORTANT SAFETY INSTRUCTIONS

- Do not connect the Karaoke Player to projection TVs (TVs that use projection screens instead of cathode ray tubes) because this may cause screen discoloration.
 - Adult assembly is required for battery installation and product set-up.
 - Input cable is not a toy. Adult set-up and supervision is required.
 - Do not wind input cable around player handle.
 - Be sure to grasp the plastic jack casing when disconnecting the audio / video cable. Do not pull on the cables to disconnect.
- To Avoid Battery Leakage:
- Always insert batteries correctly, and follow the battery manufacturer's instructions
 - Do not mix old batteries and new batteries or alkaline, standard (carbon zinc) or use rechargeable (nickel-cadmium) batteries.
 - Always remove weak or dead batteries from the product.
 - Remove batteries before extended storage.

The technology in this product is protected by the following United States patents:

4,688,464 / 5,301,259 / 5,231,671 / 5,428,708 / 5,567,901 / 5,641,926 / 5,986,198



Trouble Shooting - FAQ

Included with your Karaoke TV Star

When I go to the website I keep getting sent back to the profile page, even though I've entered my profile already.

Make sure your Karaoke Player is turned on and connected to your computer using the USB cable. Ensure that your Internet Browser (Microsoft Explorer or Netscape) has cookies enabled. To enable cookies, refer to your browser's "Help" section and search for "cookies".

Can I only purchase songs with a credit card?

Yes, www.onkeysongs.com accepts MasterCard, VISA and VISA Check Card.

I've changed my email address, can I still buy songs?

Yes. Logon to www.onkeysongs.com, edit your account and update your email address information.

I can't download the songs I've purchased.

See "Initial Setup". The Karaoke Manager application must be installed and running before you can download songs and transfer them to your Karaoke Player.

I'm having problems installing my Karaoke Manager.

See the Help section on the website or on the installation CD that came with your Karaoke Player. Ensure that your computer is running Windows 98 Second Edition or later. To determine what operating system you are using right click on "My Computer" and select properties.

I loaded the CD, but nothing happened.

Double Click on "My Computer". Select the CD-ROM drive with the CD in it, and open the "Setup" file.

I forgot to install the software before connecting the Karaoke Player to my USB.

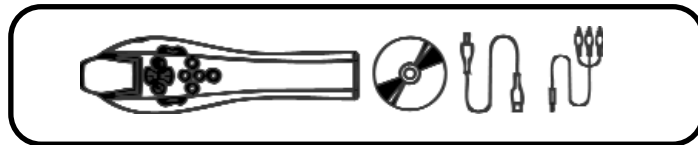
Follow the Windows prompts to install a new USB device before beginning Step 1 of Initial Setup.

Can I buy a second player and use the songs from my original player on it?

Yes you may add a second player to your web account. Simply plug your new player into your computer's USB port, power it on, and click "Connect to website" on the Karaoke Manager program. You will be taken to the account setup page of www.onkeysongs.com. Enter your original email and password. The new player will be added to your existing account. Due to song license regulations, the limit for this type of song sharing is two players per account.

Included with your Karaoke TV Star Player you should find:

- Karaoke Manager software CD
- USB cable
- Audio Video cable



You will also need:

- 4 AA batteries
- #1 Philips (cross-head) or Slot-head screwdriver

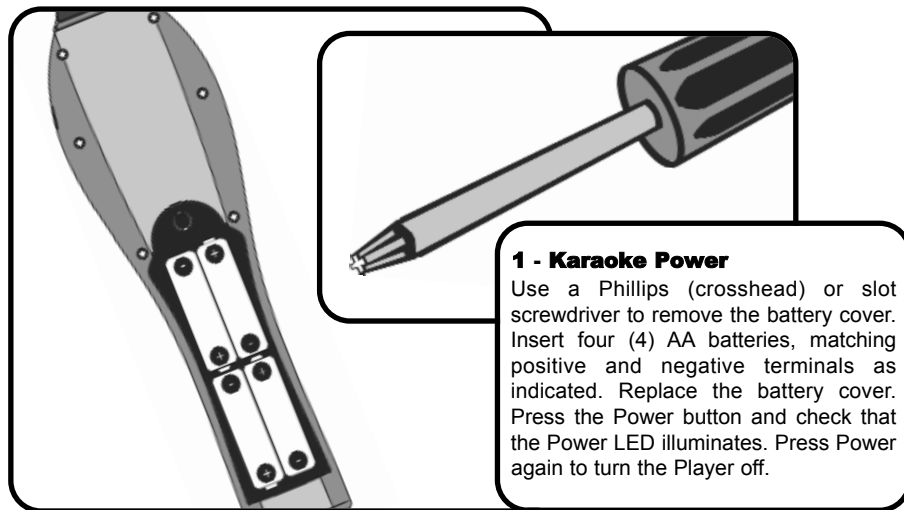
Your new Karaoke Player comes complete with everything you need to sound like a star. The very same voice processing technologies used in professional sound studios are built right into your player. With just the press of a button you can ensure that your voice is always perfectly on key. You can also change your voice to sound like someone else, or give the illusion that you're singing within a different space. Even if you've never sung before, you'll have fun with the many features included with your new Karaoke player. Have a look through the Quick start instructions to get singing right away.

Quick Start - Insert Batteries

Trouble Shooting - FAQ



Quick Start



We've compiled the following list of frequently asked questions and answers to help you in case you need to troubleshoot. An updated list of Frequently Asked Questions can be found on the website, www.onkeysongs.com.

I've connected my Karaoke Player to the Input of my TV, and turned on the TV, but nothing happens.

You will need to set your TV to receive Aux Input. Connect and turn on your Karaoke Player then press the "Input" or "Aux" button on your TV or its remote control until the Karaoke Player screen is displayed on your TV. If your remote control does not have either of these buttons, you may find the Aux input select by turning the channel below channel 2. Please refer to the instructions that came with your TV.

The Karaoke Player has stopped working -- all I get is static on my TV.

You have lost power. A low-battery icon will appear on your TV screen when the batteries need replacing. Replace the batteries, matching the plus and minus markings with the positive and negative terminals.

The volume (both music and voice) is too loud / soft.

Use the volume control on your TV to change the overall volume.

I can't hear my voice over the music / I can't hear the music over my voice.

Use the volume wheel on the Karaoke Player to change the volume level of your voice. Use the Up and Down buttons to adjust the music level.

The Karaoke Player isn't picking up my voice.

Hold the microphone closer to your mouth, so that the microphone will pick up your voice and not other sounds.

I'm getting squealing / feedback.

The Karaoke Player is too close to your speakers. Move the Karaoke Player away from the speakers.

Trouble Shooting



Adding More Songs - Advanced

Quick Start - TV Connections

Adding More Songs

Creating a Custom Songlist - Continued

To remove a song from "Songs in my Player"

Select the song and click the left pointing green arrow button. If you want to remove all the songs from the list, click "Clear Current Songlist". This removes songs from your Karaoke Player. The songs will still be stored on your computer. They will show up in the "Songs in my computer" window on the Karaoke Manager program.

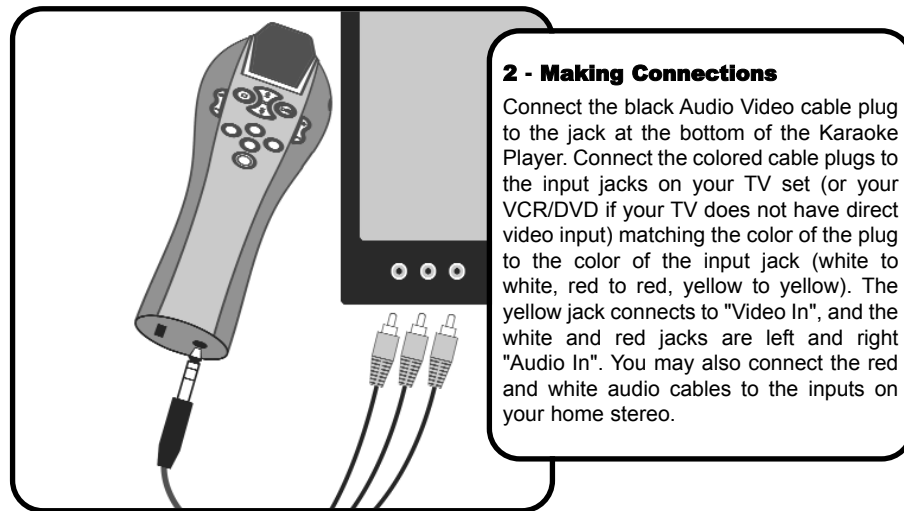


- Click "Transfer songs to my Player".
- Disconnect USB cable to finish.

The next time you connect your Karaoke Player to your TV to start singing, the first item displayed on your TV screen will be "Go to Downloaded Songlist". Selecting this item takes you to a list of the downloaded songs. To get back to the original songs, select "Go to Original Songlist".

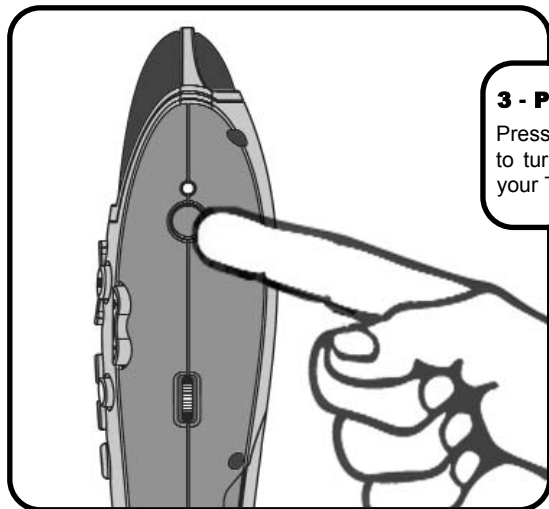


Quick Start



Quick Start - Power Up

Quick Start



3 - Power Up
Press the Karaoke Player's Power button to turn the Karaoke Player on. Turn on your TV (and VCR/DVD if used).

Adding More Songs - Advanced

Creating a Custom Songlist



- Start the Karaoke Manger Program by double clicking on the icon on your desktop.
- Connect Karaoke Player to your computer using the USB cable and turn the Karaoke Player on.



- Click "Clear Current Songlist".
- Select the songs you wish to transfer to the player from "Songs in my Computer".
- Click on the song title and drag to "Songs in my Player".

You can also



- Select one or more songs with the mouse, and click the right pointing green arrow button.

Adding More Songs



Adding More Songs - 3 Easy Steps

Quick Start - Set your TV to AUX

3 - Transfer Songs to my Karaoke Player

If you have purchased songs previously, you must manually add your new songs to the "Songs in my Player" window.



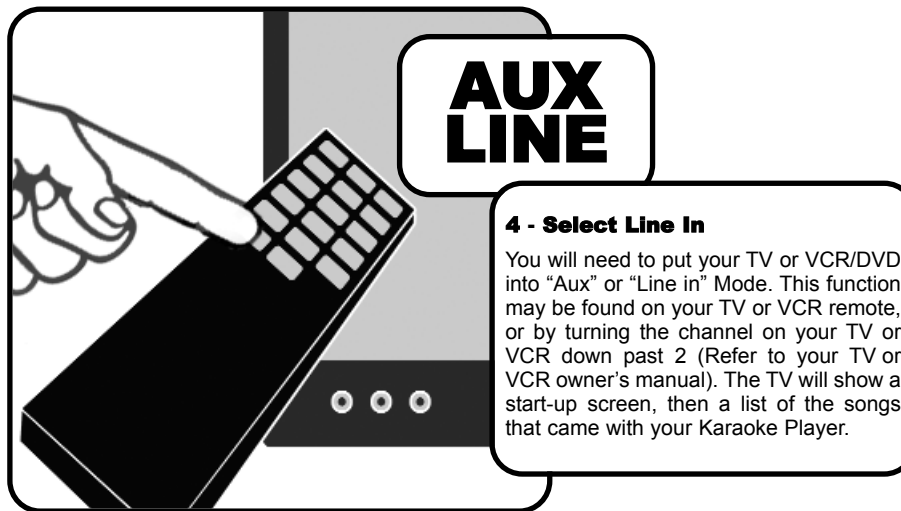
- Select the song titles in the "Songs in my computer" window with your mouse.



- Click the right pointing arrow in the middle of the program window. The song titles will appear in the right hand "Songs in my player" window.

- Click "Transfer songs to my player".
Disconnect USB cable to Finish.

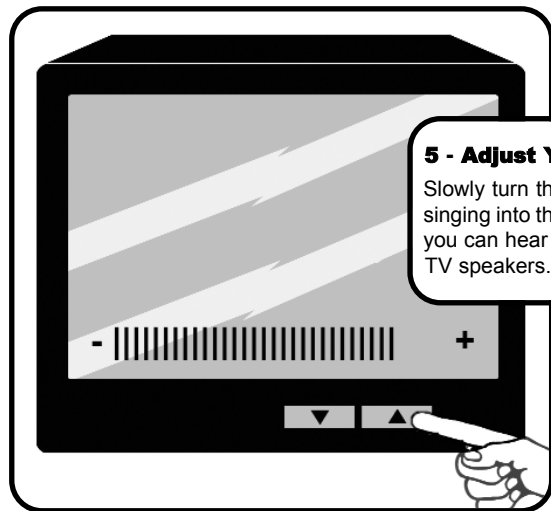
The next time you connect your Karaoke Player to your TV to start singing, the first item displayed on your TV screen will be "Go to Downloaded Song List". Selecting this item takes you to the list of downloaded songs. To get back to the original songs, select "Go to Original Songlist".



Quick Start - Turn TV Volume Up



Quick Start



5 - Adjust Your TV Volume

Slowly turn the volume of your TV up while singing into the Karaoke Player. Do this until you can hear your voice clearly through the TV speakers.

Adding More Songs - 3 Easy Steps

2 - Get Songs (download purchased songs to your Computer)



- Click "Get Songs from my Web Account". The songs in your web account will be transferred to your computer.
- If this is your first purchase, your songs will be automatically loaded into your Karaoke Player. You'll then be ready to sing.

If you have previously purchased songs, you must follow Step 3 to transfer the songs to your Karaoke Player.



Adding More Songs

Adding More Songs - 3 Easy Steps

Quick Start - Song Select

Adding More Songs

1 - Buy Songs

Connect the Karaoke Player to your computer using the USB cable, and turn the Player on.



- Double-click the Karaoke Manager icon on your computer (if the application is not already running).



- Click the "Connect to Website" button. This will connect you to www.onkeysongs.com.

Follow the instructions on the website to purchase songs. If you need help, press the "Help" button located in the Karaoke Manager menu bar, or access the on-line Help at www.onkeysongs.com. Once you have purchased a song, it is stored in your web account. You'll still need to complete steps 2 and 3 to add the songs to your player.



6 - Song Select

The Karaoke Player comes with songs built in. These song titles will be listed on your TV screen. Use the Up/Down buttons on the Karaoke Player to scroll through the list. Press the Play button to select the highlighted song. To select extra songs, see "Adding More Songs".

Quick Start

Quick Start - Song Play



Quick Start

7 - Song Play

After pressing Play your selected song will begin to play. Lyrics are displayed on the TV and highlighted to indicate when they should be sung. You can pause the song by pressing the Play/Pause button. Press the stop button to return to the songlist.

Adding More Songs - Initial Setup

2 - Connections

Connect the Karaoke Player to your computer using the USB cable, and turn the Karaoke Player on.

3 - Start the Karaoke Manager

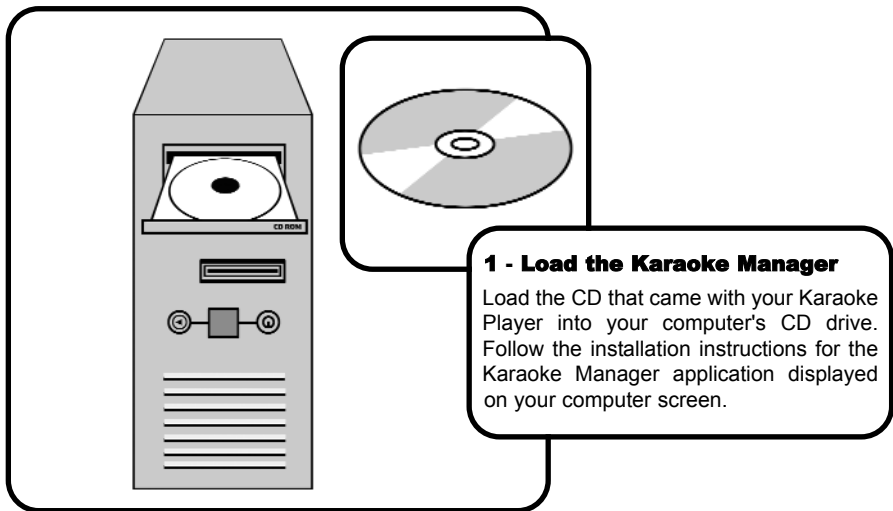
Double-click the Karaoke Manager icon, which should now be on your desktop. This will start the Karaoke Manager Program.



Adding More Songs

Adding More Songs - Initial Setup

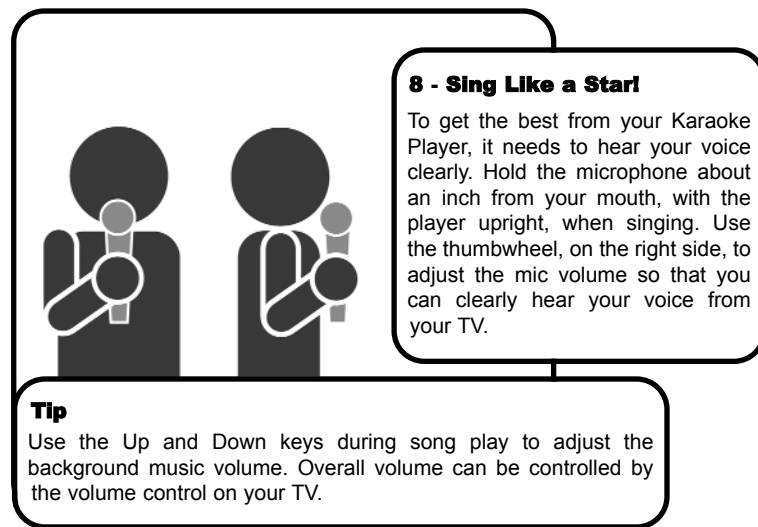
Adding More Songs



Quick Start - Sing Like a Star



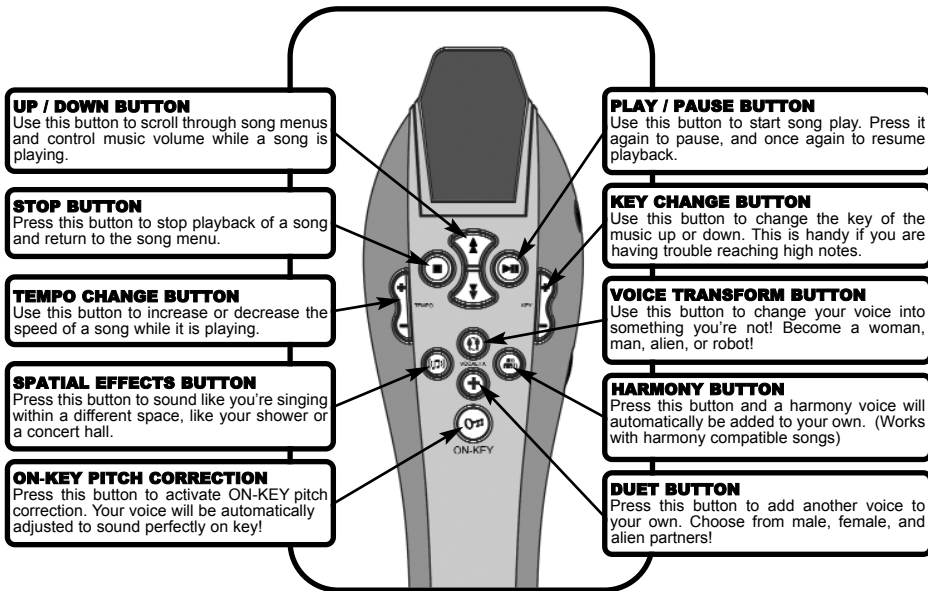
Quick Start



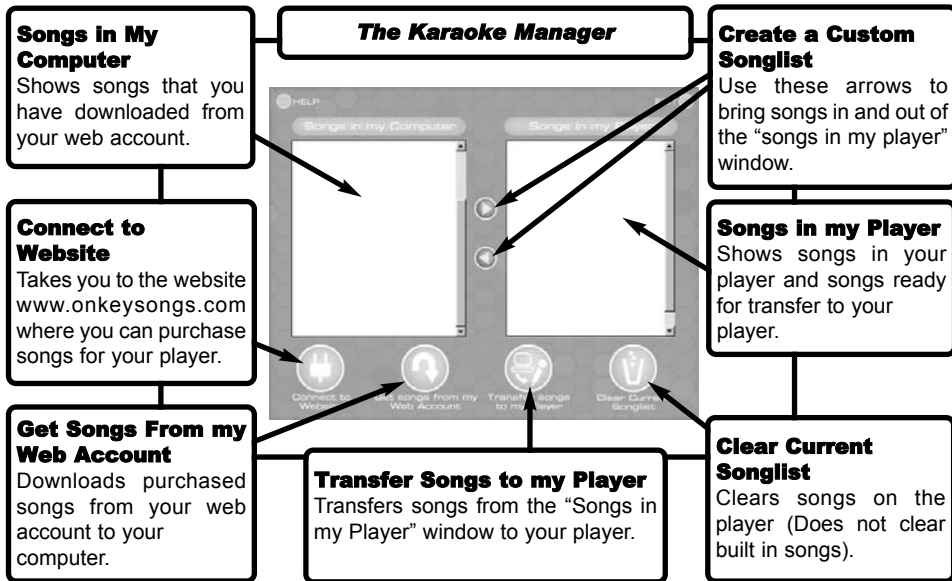
Karaoke Features - Buttons



Karaoke Features



Adding More Songs - Software



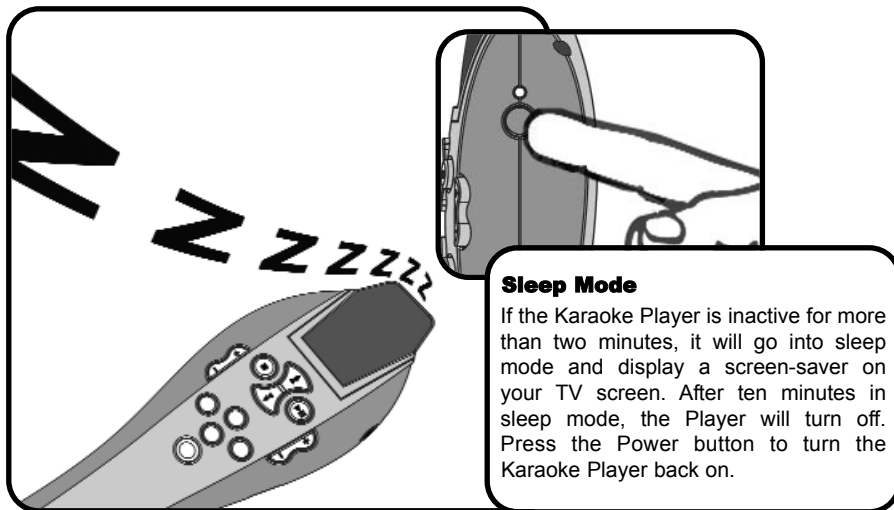
Adding More Songs



Functions - Sleep Mode




Functions








Karaoke Features - Spatial Effects



Karaoke Features



Spatial Effects Button
Press this button to activate spatial effects. Spatial effects change the "room" you are singing in by changing the virtual space around your voice. You can sound like you're singing in the shower or yodeling in the Grand Canyon. These icons are displayed in the upper right hand corner of your TV screen. To hear the next effect, just press the button again.

-  **Shower Effect**
Sing in the shower without getting wet.
-  **Stage Effect**
No lineups, no tickets -- you're the star!
-  **Big Room Effect**
Echoes like a huge mansion.
-  **Stadium Effect**
Your fans will be doing the "wave".
-  **Mountain Effect**
Practice your yodel.

Karaoke Features - On-Key Pitch



Karaoke Features



On-Key Button

Press the On-Key button to activate automatic pitch correction. Your voice will sound perfect! Press this button once again to activate scoring.



On-Key Function (ON)

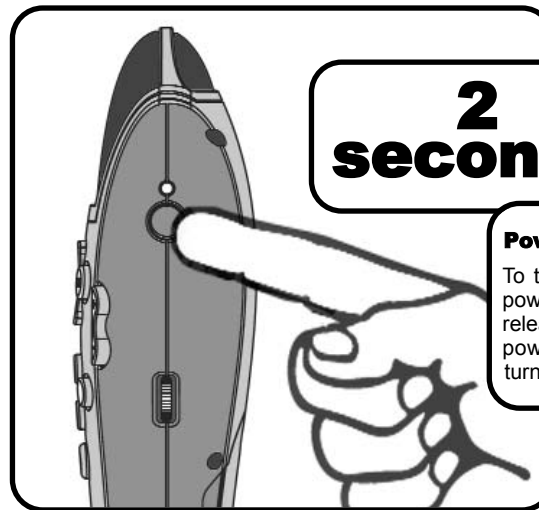
The pitch of your voice is automatically corrected to match the melody line in the song.



Scoring Function (ON)

A score appears next to the thumb icon while you are singing. Your score goes up or down depending on how well you sing. Your singing is rated according to the accuracy of your pitch and timing. This function is great for measuring your improvements!

Functions - Power Off



2
seconds

Power off

To turn off your Karaoke Player hold the power button down for two seconds then release. When the player has finished its power down sequence, the light will turn off.



Functions

Functions - Volume Control

Karaoke Features - Transform



Functions

Adjust the Music Volume
Press the up and down buttons while the song is playing. Once you are satisfied with the volume level of your voice in relation to the background music, you can adjust the overall volume on your TV or Stereo.

Adjust the Volume of Your Voice
by turning the volume wheel on the side of your Karaoke Player.



Karaoke Features

Transform Button
Press this button to sound like someone else. Press the button again to switch to the next effect.

Female to Male
Lowers the pitch of your voice. This effect sounds great on kid's voices too!

Male to Female
Raises the pitch of your voice. Reach those high notes you never thought you could!

Alien
Disguise your voice to sound like a visitor from another world!

Techno-Voice
The same cool techno voice effect you've heard in many pop songs. When selected, this pitch-correcting effect is added to your voice at certain points within the song.

Karaoke Features - Duet



Karaoke Features



Duet Button

Press this button to add a second voice to your own. You'll sound like you're singing along with the partner of your choice. Press the button again to change your partner.



Copies your voice and raises the pitch. The higher voice is then added to your own to make you sound like you're singing with a female partner.



Copies your voice and lowers the pitch. The lower voice is added to your own to make you sound like you're singing with a male partner.



Adds the alien version of your voice to your own to make you sound like you're singing with an alien.

Karaoke Features - Harmony



Karaoke Features



Harmony

Press this button to activate the harmony function. When you sing, you'll hear your own voice in two-part harmony. Harmony automatically turns on and off at the appropriate parts in the song. Songs compatible with the harmony function are indicated with a harmony icon beside the song title on the songlist screen.

